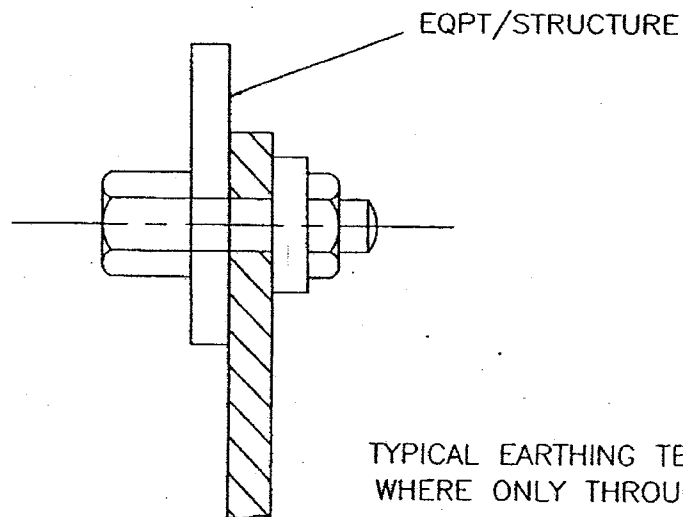


TYPICAL EARTHING TERMINAL JOINT



NOTE

1. THIS IS GENERAL TYPICAL BOLTING ARRANGEMENT APPLICABLE TO ALL PANELS, EQUIPMENT, ETC, WHERE BOLTING ARRANGEMENT IS PROVIDED.
2. IN CASE EARTHING TERMINAL COMPRISES ONLY A TAPPED HOLE SUITABLE BOLT/ SCREW WITH WASHER MAY BE USED FOR EARTHING CONDUCTOR TERMINATION



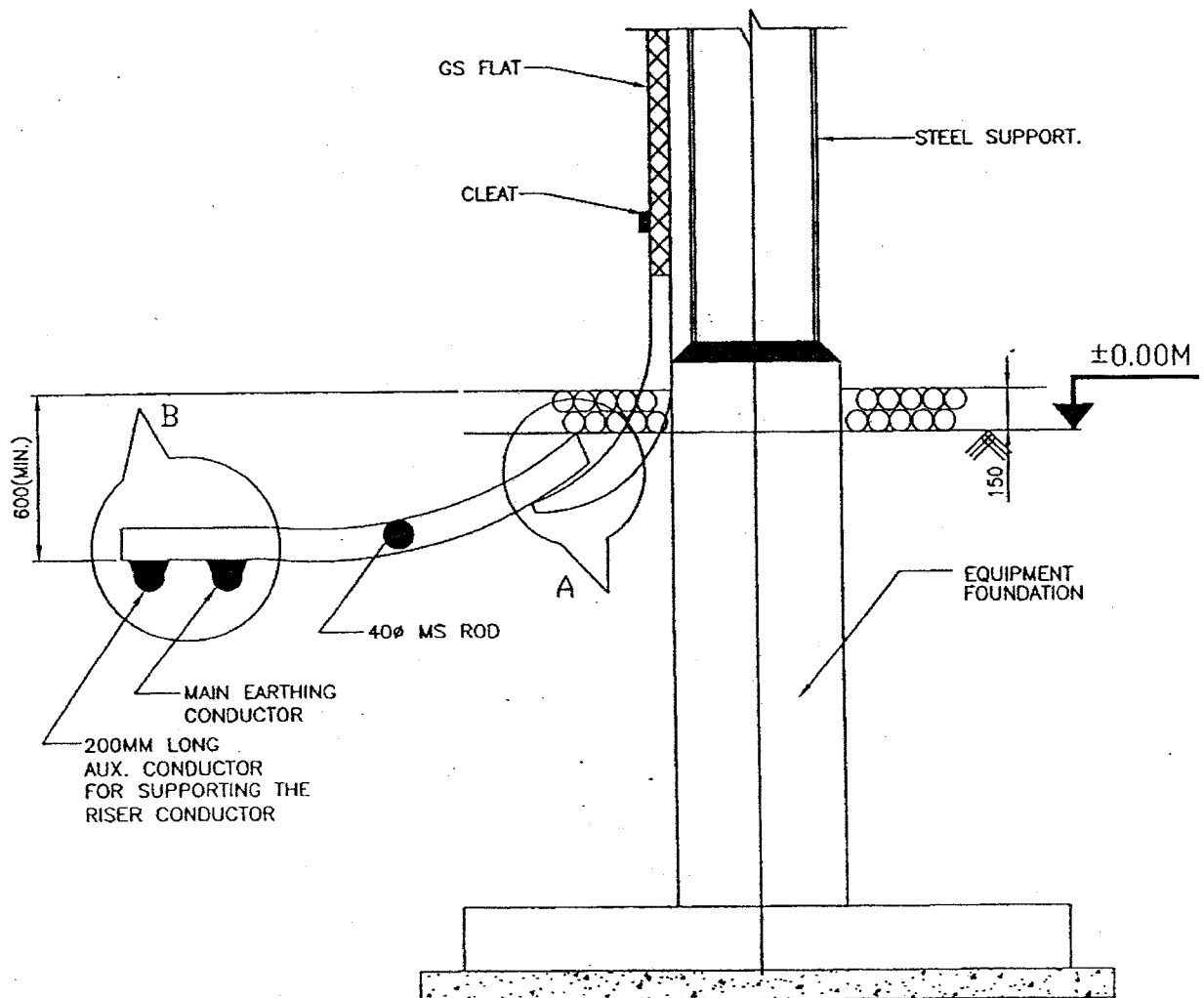
EQUIPMENT EARTHING DETAILS
TYPICAL ARRANGEMENT OF BOLTED JOINTS

DRG. No.

TB-4-314-316-008

REV. 01

SHEET No.
16



TYPICAL DETAILS OF RISER



EQUIPMENT EARTHING DETAILS
WELDING DETAILS

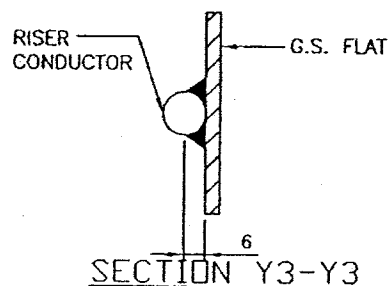
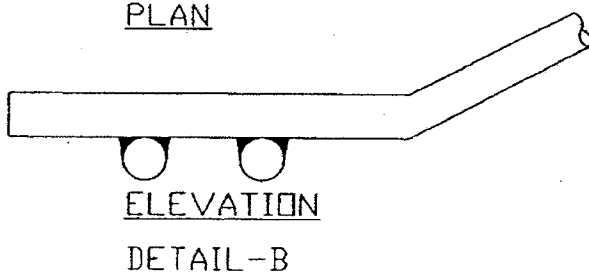
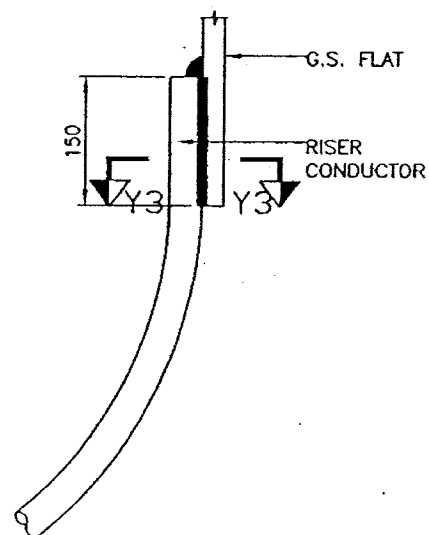
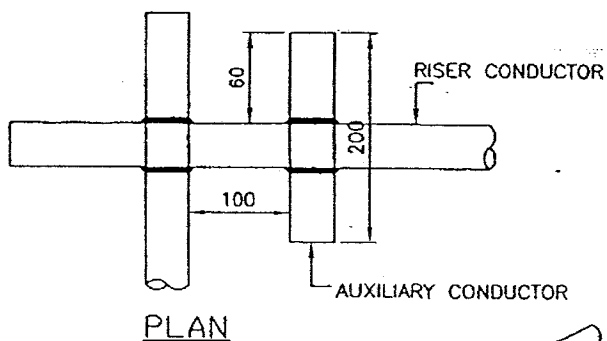
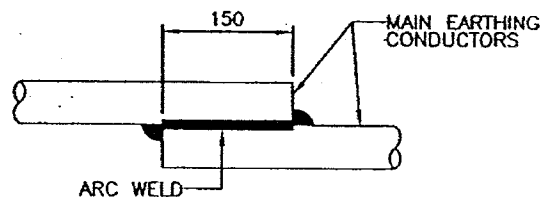
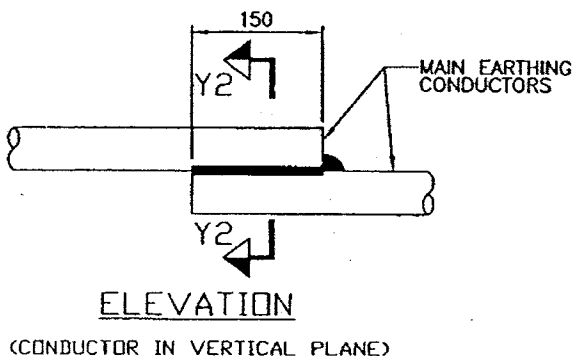
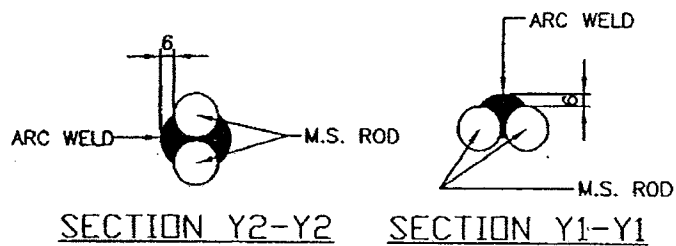
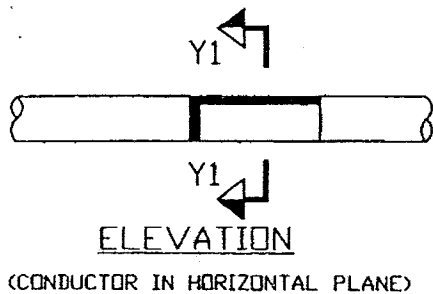
COMPUTER REF. NO.

DRG. No.

TB-4-314-316-008

REV. 01

SHEET No.
17



TYPICAL OVERLAPPING JOINT OF TWO CONDUCTORS



EQUIPMENT EARTHING DETAILS **WELDING DETAILS**

COMPUTER REF. NO.

DRG. No.

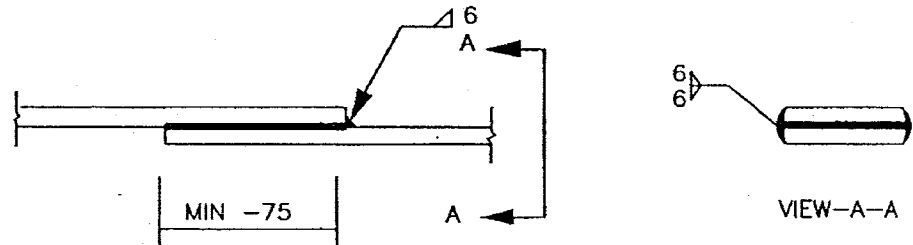
TB-4-314-316-008

REV. 01

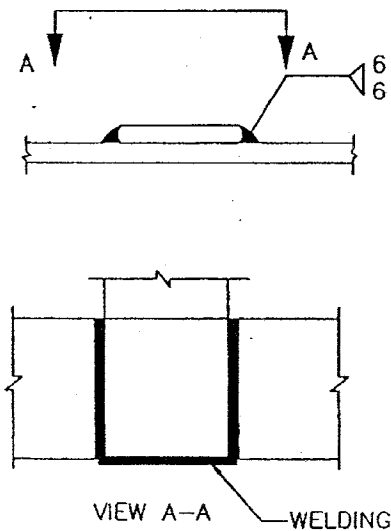
SHEET No.
18

C. STRIP TO STRIP (50X6 MS FLAT ONLY)

1. STRAIGHT LAP JOINT/RISER



2. CROSS LAP JOINT



EQUIPMENT EARTHING DETAILS WELDING DETAIL

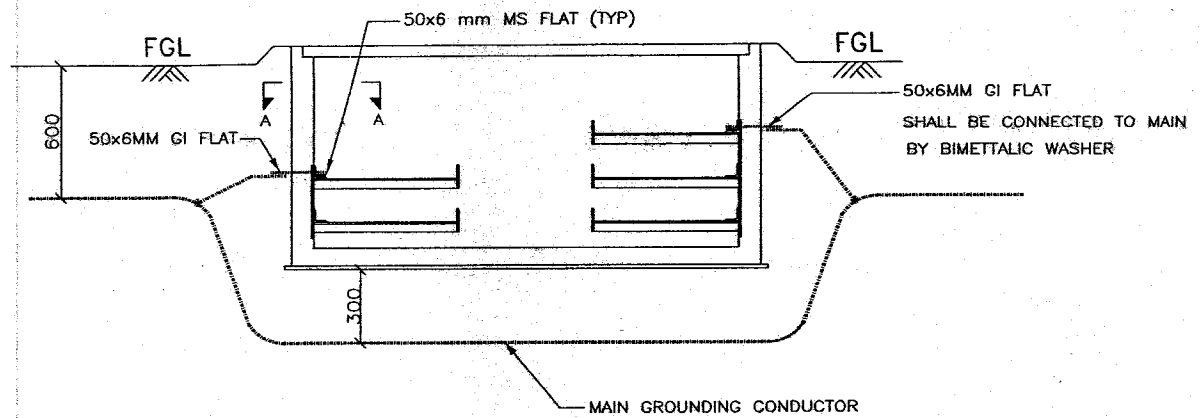
COMPUTER REF. NO.

ORG. No.

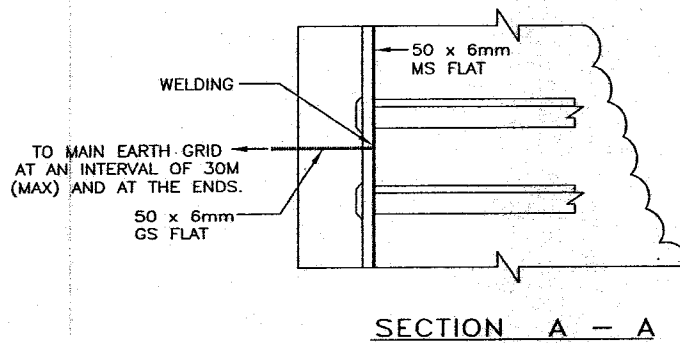
TB-4-314-316-008

REV. 01

SHEET No.
19



TYPICAL CROSS SECTION OF CABLE TRENCH



NOTE:

1. ALL TRENCHES SHALL BE EARTHED AT INTERVAL OF 30M ALONG THE LENGTH TRENCH & FREE ENDS.



EQUIPMENT EARTHING DETAILS
CABLE TRENCH

COMPU. DRG. REF.

DRG. NO.

TB-04-314-316-008

REV. 00

SI